



**THE BEST FOR YOUR WOOD.**

# **KORA® Products for Wood Treatment**





*KORA® – who we are*



## Welcome to KORA!

**KORA®** stands for Kurt Obermeier Raumland and for more than **75 years of experience** in wood protection. We have been supplying professional wood preservative products to our customers in commerce, trade and industry since 1948.

We use the expertise that we have acquired over the decades to develop and manufacture our own premium quality products.

There are many good reasons why professional users choose KORA®: the **good quality** and **extensive product range** as well as the detailed and **in-depth advice** provided by our wood protection experts. The personal support provided gives you the peace of mind so that you always choose the right product and give your wood the optimum protection.



Mitglied der  
**DGNB**  
Deutsche Gesellschaft für Nachhaltiges Bauen  
German Sustainable Building Council







# Contents

KORA® Wood Preservative – About Us	2
KORA® Product Overview	6
Practical Tips	8

## Koranol®

Koranol® Imprägnierlasur (Impregnation Scumble)	10
Koranol® Imprägnierlasur Pro (Impregnation Scumble Pro)	12
Koranol® Compact MSL	14
Koranol® Zaun-Braun (Fence Brown)	16
Koranol® Holzpflgeöl (Wood Care Oil)	18
Koranol® Hartwachs-Öl (Hard Wax Oil)	20

## Primers

Koranol® Grund Farblos (Primer Colourless)	22
Koranol® Holzbau Grund (Wood Construction Primer)	23

## Koralan®

Koralan® Holzöl Spezial (Wood Oil Special)	24
Koralan® Holzöl (Wood Oil)	26
Koralan® Außenfarbe (Exterior Paint)	28
Koralan® Dekorlasur (Decorative Scumble)	30
Koralan® Edelmwachs (Luxury Wax)	32
Koralan® Parkettlack (Parquet Varnish)	34
Koralan® Vergrauungslasur (Greying Scumble)	36
Koralan® Color-Lasur (Colour Scumble)	38
Koralan® Designlasur (Design Scumble)	40
Koralan® Isolierfarbe Weiß (Insulating Paint White)	42
Koralan® Hirnholzschutz (End Grain Wood Protection)	43
Koralan® Holzentgrauer (Grey Wood Renovator)	46
Koralan® Holzreiniger (Wood Cleaner)	47
Koralan® Antibelag (Anti-Growths)	48
Koralan® Cut & Protect	50
Koralan® Beutenschutz-Farbe (Hive protection colour)	52
Koralan® Beutenschutz-Lasur (Hive protection scumble)	54
Koralan® Futterzargen-Lack (Brood box varnish)	56

## Accessories

Koralan® Accessories	58
----------------------	----

## Primers

Koralan® Imprägnier Grund Farblos (Impregnation Primer Colourless)	44
Koralan® Imprägnier Grund Weiß (Impregnation Primer White)	45

# KORA® Product Overview

Solvent-based

*for outdoors*

## Primer

### Koranol®

Grund Farblos

Primer Colourless P. 22

Holzbau Grund

Wood Construction Primer P. 23

*for outdoors*

## Weather protection with a glazed effect

### Koranol®

Imprägnierlasur

Impregnation Scumble P. 10

Imprägnierlasur Pro

Impregnation Scumble P. 12

Compact MSL P. 14

Zaun-Braun

Fence Brown P. 16

Holzpflegeöl

Wood Care Oil P. 18

Water-based

### Koralan®

Imprägnier Grund Farblos

Impregnation Primer Colourless P. 44

Imprägnier Grund Weiß

Impregnation Primer White P. 45

### Koralan®

Holzöl Spezial

Wood Oil Special P. 24

Holzöl Wood Oil P. 26

Dekorlasur

Decorative Scumble P. 30

Vergrauungslasur

Greying Scumble P. 36

Color-Lasur

Colour Scumble P. 38

Designlasur

Design Scumble P. 40

Hirnholzschutz

End Grain Wood Protection P. 43

*for outdoors*

**Opaque weather  
protection**

**Koranol®**

*for indoors*

**Surface  
protection**

**Koranol®**

Hartwachs-Öl  
Hard Wax Oil P. 20

**Solvent-based**

**Koralan®**

Außenfarbe  
Exterior Paint P. 28

Isolierfarbe Weiß  
Insulating Paint White P. 42

**Koralan®**

Dekorlasur  
Decorative Scumble P. 30

Edelwachs Luxury Wax P. 32

Parkettlack  
Parquet Varnish P. 34

Isolierfarbe Weiß  
Insulating Paint White P. 42

**Water-based**

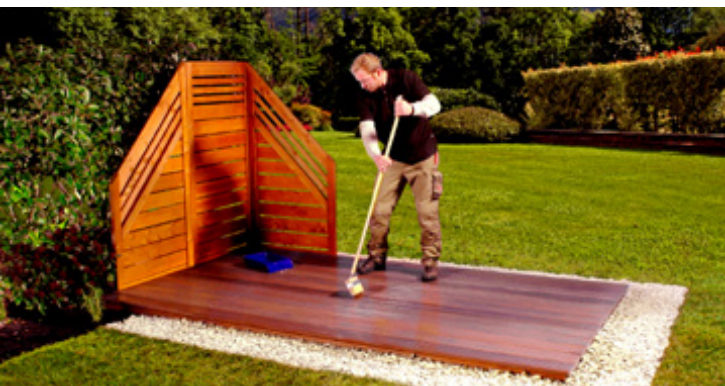
## Practical Tips



**Wood is a valuable natural product. However if left unprotected, it has no protection from weather factors. The highly effective KORA® wood preservative products give your wood optimum protection from sun, rain and much more. This way, it looks good for a long time and retains its value. Please refer to the following information when using our Koranol® and Koralan® products:**

- The substrate must be clean, dry and free of grease.
- You should sand down planed wooden surfaces before processing (80/120 grain size) to remove raised wood grains and to achieve a uniform wooden surface. The same applies to weathered wood and wood with an uneven surface texture.
- It is advisable to check the colour in an inconspicuous place before processing a large area.
- We recommend that you always make a trial application.
- The intensity of the colour is particularly influenced by the condition of the substrate, type of wood, application technique and wood moisture content.





- Drying may take significantly longer in unfavourable weather conditions (high humidity, low temperatures).
- You should definitely protect freshly coated wood outdoors from rain until it is fully dry.
- The lighter the shade chosen and the more intense the weathering, the shorter the after-care intervals.
- A colourless shade on wood outdoors offers no UV protection and does not suffice as a single coat.
- Only regular care protects the surface of your wood from the sun, rain and greying and reduces the swelling and shrinkage of the wood.
- Please refer to the information in the technical data sheets and on the containers before using the product/s.

You will find detailed information about our products and the processing of our products at [www.kora-holzschutz.de/en](http://www.kora-holzschutz.de/en) or directly using the QR code:



# Koranol® Imprägnierlasur

## Impregnation Scumble

Solvent-based premium preservative wood scumble based on alkyd resin

*for outdoors*



### Properties:

- ✓ Weather-resistant
- ✓ Highly transparent
- ✓ Open-pored
- ✓ Moisture-regulating
- ✓ No flaking

Perfect for the decorative finish of coniferous wood outdoors.

**Wood-preserving impregnation, primer and decorative weather protection in one single product.**

Contains water-repellent waxes.

The coating film is protected against blue stain and mould infestations.

**Application quantity:** 120–160 ml/m<sup>2</sup>

**Container sizes:** 0.75 l | 2.5 l | 5 l



Coating film is protected against blue stain and mould infestations



Water-repellent



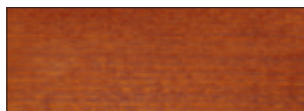
UV protection



Ideal for coniferous wood



Scots Pine



Teak



Pine/Scots Pine



Walnut



Pine



Rosewood



Light Oak



Ebony



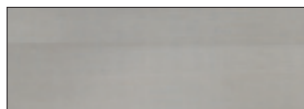
Rustic Oak



Spruce Green



Chestnut



Silver Grey



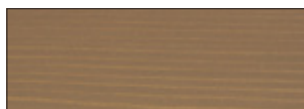
Driftwood



Granite



Anthracite



Quartz

Also available in a colourless grade.

The colourless grade is the only shade not suitable for outdoors.



1 l is sufficient  
for approx. 6–8 m<sup>2</sup>  
in two coats

# Koranol® Imprägnierlasur Pro

## Impregnation Scumble Pro

Solvent-based premium preservative wood scumble  
based on alkyd resin



**for outdoors**



### Properties:

- ✓ Weather-resistant
- ✓ Highly transparent
- ✓ Open-pored
- ✓ Moisture-regulating
- ✓ No flaking



Perfect for coniferous wood outdoors.

**Wood-preserving impregnation, primer and decorative weather protection in one single product.**

Provides preventative protection from blue stain and mould infestations.

Contains water-repellent waxes.

**Approved biocidal product as per Regulation (EC) 528/2012.**

**Application quantity:** 166–180 ml/m<sup>2</sup>

**Container sizes:** 2.5 l | 5 l | 20 l

Use biocidal products carefully.  
Always read the labelling and product information before use.  
The product is not available in all countries.



Protection  
from blue stain  
and mould



Water-repellent



UV protection



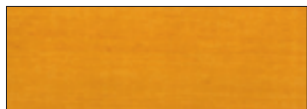
Ideal for  
coniferous  
wood



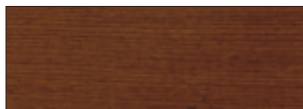
Scots Pine



Teak



Pine/Scots Pine



Walnut



Pine



Rosewood



Light Oak



Ebony



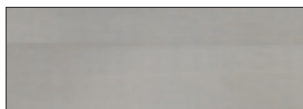
Rustic Oak



Spruce Green



Chestnut



Silver Grey



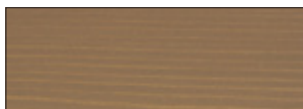
Driftwood



Granite



Anthracite



Quartz

Also available in a colourless grade.

The colourless grade is the only shade not suitable for outdoors.



1 l is sufficient  
for approx. 5–6 m<sup>2</sup>  
in two coats

# Koranol® Compact MSL

Solvent-based, thixotropic intermediate layer based on alkyd resin

*for outdoors*



## Properties:

- ✓ Weather-resistant
- ✓ Moisture-regulating
- ✓ Transparent
- ✓ Silk gloss finish
- ✓ Elastic

As weather protection and for the surface design of dimensionally stable and relatively dimensionally stable wood outdoors without ground contact. Koranol® Compact MSL is suitable, e. g. for wooden houses, exterior doors, windows etc.

**Application quantity:** approx. 160–200 ml/m<sup>2</sup> in two to three coats

**Container sizes:** 0.75 l | 2.5 l | 5 l | 20 l



Highly water-repellent



UV protection



1 l is sufficient for approx. 5–6 m<sup>2</sup> in two coats

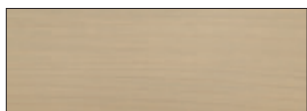




Colourless <sup>1)</sup>



Opal White



Antique Grey



Ash



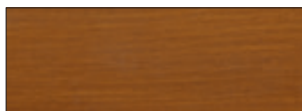
Scots Pine



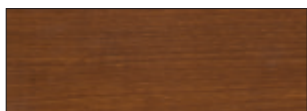
Old Pine



Mahogany



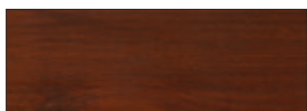
Light Oak



Dark Oak



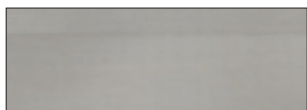
Teak



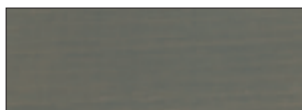
Rosewood



Walnut



Silver



Silver Grey



Ebony



Anthracite



Swedish Red



Moss Green

1) The only shade not suitable for outdoors.

## Koranol® Zaun-Braun Fence Brown

Solvent-based wood scumble based on alkyd resin

*for outdoors*



### Properties:

- ✓ Weather-resistant
- ✓ Moisture-regulating
- ✓ Transparent
- ✓ No flaking

The brown stained wood scumble is ideal for the decorative surface design of wood in the garden, e. g. fences, pergolas, gates etc.

**Application quantity:** approx. 120–160 ml/m<sup>2</sup> in two coats

**Container sizes:** 2.5 l | 5 l



Water-repellent



UV protection



1 l is sufficient  
for approx. 6–8 m<sup>2</sup>  
in two coats



Dark Brown



# Koranol® Holzpflegeöl

## Wood Care Oil

Solvent-based wood care oil based on alkyd resin

*for outdoors*



### Properties:

- ✓ Weather-resistant
- ✓ Moisture-regulating
- ✓ Transparent
- ✓ High penetration capability

For all wood, where the natural character of the wood is to be particularly emphasised and preserved for a long time. The addition of special waxes makes the wood care oil water-repellent and particularly effective for garden furniture, closeboard fencing, decking, trellises etc.

**Application quantity:** approx. 120–160 ml/m<sup>2</sup> in two coats

**Container sizes:** 0.75 l | 2.5 l | 5 l



Water-repellent



UV protection



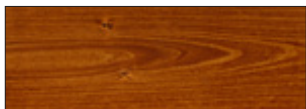
1 l is sufficient  
for approx. 6–8 m<sup>2</sup>  
in two coats



Natural



Pine



Larch



Bangkirai



# Koranol® Hartwachs-Öl

## Hard Wax Oil

Universally applicable floor and furniture wax

*for indoors*



### Properties:

- ✓ Breathable
- ✓ Ready to polish
- ✓ Low yellowing
- ✓ Silky matt gloss
- ✓ Moisture-regulating

For the decorative design of all wood and wooden flooring indoors. The hard wax oil is based on natural oils and waxes and therefore provides a surface seal that is highly resistant to abrasion.

National technical approval No. Z-157.10-159  
(Emissions-tested building product as per DIBt primer specifications)

**Fulfils the requirements according to  
DIN EN 71-3 "Safety of Toys" in accordance  
with Directive 2009/48/EC.**

**Application quantity:** 70 g/m<sup>2</sup> in two coats

**Container sizes:** 0.75 l | 2.5 l | 5 l | 20 l



Highly resistant to abrasion



Water-repellent



Toy safety according to DIN EN 71-3



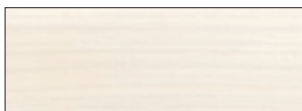
1 l is sufficient for approx. 14 m<sup>2</sup>





Colourless (light colour-firing effect)

also available colourless matt



Natural White



# Koranol® Grund Farblo

## Primer Colourless

Solvent-based wood preservation primer based on alkyd resin

**for outdoors**



### Properties:

- ✓ Enhances the durability and adhesion of subsequent coats
- ✓ Good penetration into wood
- ✓ Low-odour



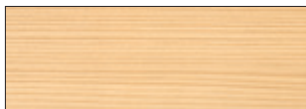
For the treatment of coniferous wood outdoors, which is then to receive a final decorative coating of scumble, paint or lacquer. Provides preventative protection from rot, blue stain and mould infestation.

Suitable for exterior cladding, gates, pergolas, fences etc.

**Approved biocidal product as per Regulation (EC) 528/2012.**

**Application quantity:** 120–140 ml/m<sup>2</sup>

**Container sizes:** 0.75 l | 2.5 l | 5 l | 20 l



Colourless

Use biocidal products carefully.

Always read the labelling and product information before use.

The product is not available in all countries.



Protection  
from blue stain,  
mold and rot



Ideal for  
coniferous  
wood



1 l is sufficient for  
approx. 7–8 m<sup>2</sup>  
in two coats

# Koranol® Holzbau Grund

## Wood Construction Primer

Solvent-based wood preservation oil for the professional



### Properties:

- ✓ Enhances the durability and adhesion of subsequent coats
- ✓ Good penetration into wood
- ✓ Low-odour
- ✓ Colourless



Ready-to-use, solvent-containing wood preservative for prevention (Iv, P) and control (Ib) according to DIN 68800-3,4. For application in use classes 1–3. For load-bearing and/or reinforcing wooden components, e. g. trusses, wood constructions, supports and non-load bearing wood in building construction. **Only for professional users, curative treatment measures only by expert users.** Approved biocidal product as per Regulation (EC) 528/2012.

### Application quantity:

- Brushing, rolling, dipping, flooding:  
preventive: 100 ml/m<sup>2</sup>; insect control: 350 ml/m<sup>2</sup>
- Borehole treatment:  
insect control with preventive effect: 10 kg/m<sup>3</sup>

**Container sizes:** 5 l | 20 l | 200 l

Use biocidal products carefully.  
Always read the labelling and product information before use.  
The product is not available in all countries.



Protection  
from blue stain  
and rot



Insect repellent



1 l is sufficient for  
approx. 6–11 m<sup>2</sup>  
in two coats

# Koralan® Holzöl Spezial

## Wood Oil Special

Premium natural oil and water-based wood preservation and care oil

for outdoors



### Properties:

- ✓ Weather-resistant
- ✓ Gives a glazed effect
- ✓ No flaking
- ✓ Moisture-regulating
- ✓ Good penetration



**Wood-preserving impregnation, primer and decorative weather protection in one single product.**

As an initial coat and after-care for wooden elements outdoors, especially coniferous wood, e. g. decking, garden furniture, privacy shields, wooden façades. Provides preventative protection from blue stain and mould infestations. Provides wood with highly effective protection from greying.

**Approved biocidal product as per Regulation (EC) 528/2012.**

**Application quantity:** 160–180 ml/m<sup>2</sup>

**Container sizes:** 0.75 l | 2.5 l | 10 l | 20 l

Use biocidal products carefully.

Always read the labelling and product information before use.

The product is not available in all countries.



Protection  
from blue stain  
and mould



Water-repellent



UV protection



Ideal for  
coniferous  
wood



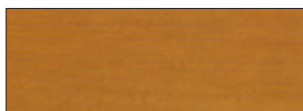
UV Natural (on larch)



Larch



Scots Pine



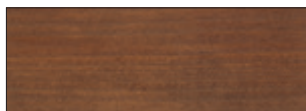
Light Oak



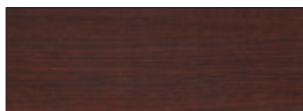
Bangkirai



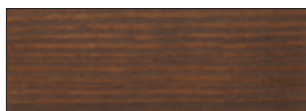
Teak



Tobacco Brown



Rosewood



Walnut



Salt Green



Silver Grey



1 l is sufficient  
for approx. 5–6 m<sup>2</sup>  
in two coats

# Koralan® Holzöl Wood Oil

Natural oil and water-based wood care oil

*for outdoors*



## Properties:

- ✓ Weather-resistant
- ✓ Gives a glazed effect
- ✓ No flaking
- ✓ Moisture-regulating
- ✓ Produces velvety surfaces

As an initial coat and to care for wooden elements, particularly made of hardwood. For wood outdoors (e. g. garden furniture, corrugated boards). Protects wooden surfaces from weather factors (sun, rain). Provides wood with highly effective protection from greying.

**Fulfils the requirements according to DIN EN 71-3**  
**“Safety of Toys” in accordance with Directive 2009/48/EC.**

**Application quantity:** 120–160 ml/m<sup>2</sup> in two coats  
(80–120 ml/m<sup>2</sup> on hardwood)

**Container sizes:** 0.75 l | 2.5 l | 10 l | 20 l



Water-repellent



UV protection



Toy safety according  
to DIN EN 71-3



Ideal for  
hardwood





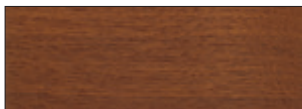
Larch (on larch wood)



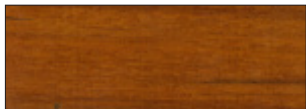
Garapa (on limba wood)



UV Natural (on teak)



Bangkirai (on teak)



Teak Wood (on teak)



Tintable



1 l is sufficient  
for approx. 6–8 m<sup>2</sup>  
in two coats

# Koralan® Außenfarbe

## Exterior Paint

Acrylic water-based weather protection paint



*for outdoors*



### Properties:

- ✓ Weather-resistant
- ✓ Moisture-regulating
- ✓ Opaque
- ✓ Silk gloss finish
- ✓ Elastic

Weather protection for wood outdoors, e. g. for soffits, half-timbered buildings, exterior doors, fences etc. Also suitable for mineral and metal substrates, such as concrete and plaster surfaces and for zinc plating.

To be used outdoors in a system with Koralan® Impregnation Primer White or Colourless.

**Fulfils the requirements according to DIN EN 71-3  
"Safety of Toys" in accordance with Directive 2009/48/EC.**

**Application quantity:** approx. 160 ml/m<sup>2</sup> two to three coats

**Container sizes:** 0.75 l | 2.5 l | 10 l



Water-repellent



UV protection



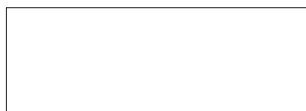
Toy safety  
according to  
DIN EN 71-3



Tintable



1 l is sufficient  
for approx. 6–7 m<sup>2</sup>  
in two coats



White



Yellow



Brilliant Yellow



Russet



Dark Brown



Blue



Powder Blue



Cobalt Blue



Red



Swedish Red



Green



Moss Green



Light Grey



Dark Grey



Black

# Koralan® Dekorlasur

## Decorative Scumble

Acrylic and water-based wood scumble

for indoors + outdoors



### Properties:

- ✓ Fast drying
- ✓ Moisture-regulating
- ✓ Highly transparent
- ✓ Low-odour

Indoors: protects from stains, dirt and dust and markedly reduces the yellowing of wood.

Outdoors: protects wood from weather factors (sun, rain).  
Sun protection thanks to the use of UV-resistant, super-lightfast pigments and a special UV absorber.

We recommend an undercoat of Koralan® Impregnation Primer Colourless when used outdoors.

**Fulfils the requirements according to DIN EN 71-3  
"Safety of Toys" in accordance with Directive 2009/48/EC.**

**Application quantity:** approx. 160 ml/m<sup>2</sup> in two coats

**Container sizes:** 0.75 l | 2.5 l | 10 l | 20 l



Water-repellent



UV protection



Toy safety  
according to  
DIN EN 71-3



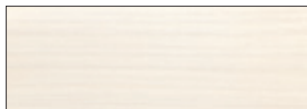
Tintable



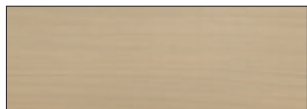
1 l is sufficient  
for approx. 6–8 m<sup>2</sup>  
in two coats



Colourless (only for indoors)



Opal White



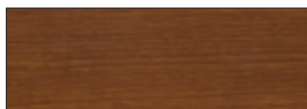
Antique Grey



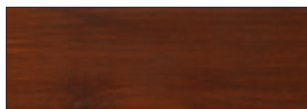
Scots Pine



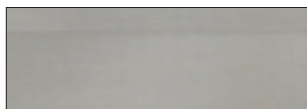
Teak



Dark Oak



Rosewood



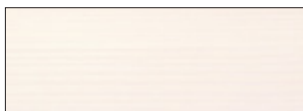
Silver



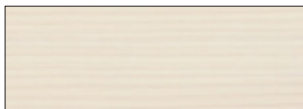
Ebony



Swedish Red



Pale White



Chalk White



Ash



Old Pine



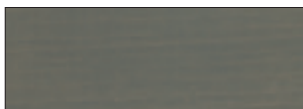
Light Oak



Mahogany



Walnut



Silver Grey



Anthracite



Moss Green

# Koralan® Edelwachs Luxury Wax

Water-based premium wood wax, polishable

*for indoors*



## Properties:

- ✓ Fast drying, polishable
- ✓ Good chemical resistance
- ✓ Reduces the susceptibility to scratching
- ✓ Enhances the structure and grain

Protects wooden surfaces from stains, dirt and dust and markedly reduces the yellowing of wood thanks to the use of UV-resistant, highly light-fast pigments and a special UV absorber. Koralan® Luxury Wax contains hydrophobic and protective waxes. For the decorative surface design of wooden ceilings, wall coverings, wooden panelling, profiled wood etc.

**Fulfils the requirements according to DIN EN 71-3  
"Safety of Toys" in accordance with Directive 2009/48/EC.**

**Application quantity:** approx. 60–80 ml/m<sup>2</sup> in two coats

**Container sizes:** 0.75 l | 2.5 l | 10 l



Water-based



UV protection



Toy safety  
according to  
DIN EN 71-3



Tintable

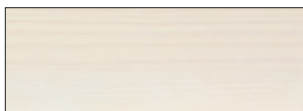


1 l is sufficient  
for approx. 12–15  
m<sup>2</sup> in two coats





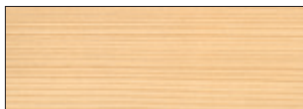
Light White



Chalk White



Silver Grey



Colourless



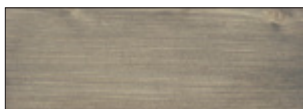
Natural Wood



Hazelnut



Sand



Slate



Teak Wood



# Koralan® Parkettlack

## Parquet Varnish

Water-based PU/acrylic varnish, silk gloss finish

*for indoors*



### Properties:

- ✓ Silk gloss finish
- ✓ Enhances the wood grain
- ✓ High abrasion resistance
- ✓ Fast drying

A surface seal that is highly resistant to abrasion, for parquet floors and floorboards indoors. Resistant to oils, alcohol, juices, cleaning agents etc.

National technical approval No. Z-157.10-36  
(Emissions-tested building product as per DIBt primer specifications)

**Fulfils the requirements according to  
DIN EN 71-3 "Safety of Toys" in accordance  
with Directive 2009/48/EC.**

**Application quantity:** 250 g/m<sup>2</sup> in two coats

**Container sizes:** 0.75 l | 2.5 l | 10 l



Highly resistant  
to abrasion



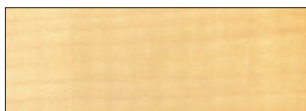
Water-repellent



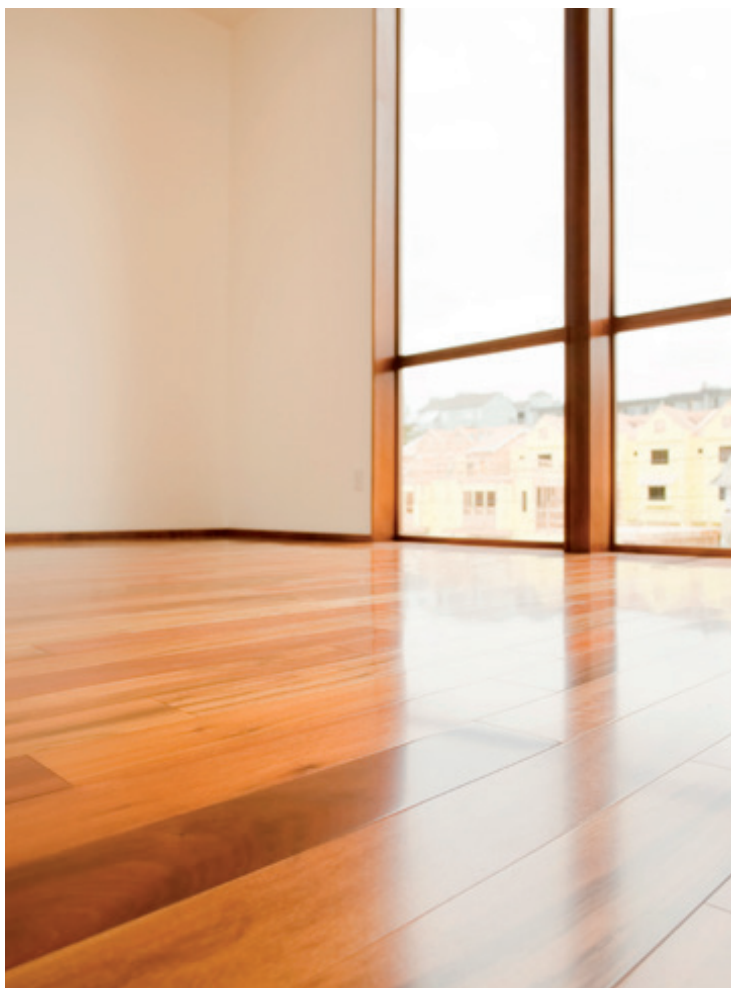
Toy safety  
according to  
DIN EN 71-3



1 l is sufficient  
for approx. 4 m<sup>2</sup>  
in two coats



Colourless



# Koralan® Vergrauungslasur

## Greying Scumble

Natural oil and water-based wood scumble

*for outdoors*



### Properties:

- ✓ Water-based
- ✓ No flaking
- ✓ Weather-resistant
- ✓ Gives a glazed effect

Gives wooden surfaces outdoors a uniform grey appearance. Ideal for modern wooden façades or façade profiles, but also for wood in the garden, e.g. privacy shields.

**Fulfils the requirements according to DIN EN 71-3**  
"Safety of Toys" in accordance with Directive 2009/48/EC.

**Application quantity:** approx. 120–160 ml/m<sup>2</sup> in two coats

**Container sizes:** 0.75 l | 2.5 l | 10 l | 20 l



Water-repellent



UV protection



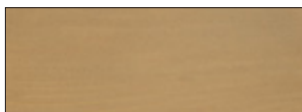
Toy safety according  
to DIN EN 71-3



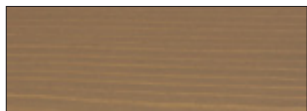
Ideal for  
coniferous  
wood



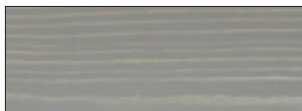
Gravel



Pyrite



Quartz



Basalt



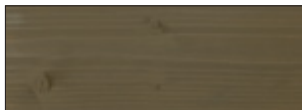
Silver



Zinc



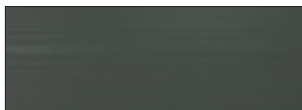
Granite



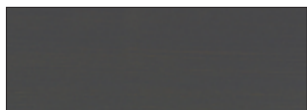
Flint



Loam



Graphite



Slate



Anthracite



Tintable



1 l is sufficient  
for approx. 6–8 m<sup>2</sup>  
in two coats

# Koralan® Color-Lasur

## Colour Scumble

Natural oil and water-based wood scumble

*for outdoors*



### Properties:

- ✓ Weather-resistant
- ✓ No flaking
- ✓ Easy to handle
- ✓ Moisture-regulating
- ✓ Gives a glazed effect

As an initial coat and after-care for wood outdoors, e. g. for wood in the garden, wooden façades, log cabins and summer houses and much more. Koralan® Colour Scumble is moisture-regulating and protects the wood from weather factors (sun, rain) and from greying.

**Fulfils the requirements according to DIN EN 71-3**  
**“Safety of Toys” in accordance with Directive 2009/48/EC.**

**Application quantity:** approx. 120–160 ml/m<sup>2</sup> in two coats

**Container sizes:** 0.75 l | 2.5 l | 10 l | 20 l



Water-repellent



UV protection



Toy safety according  
to DIN EN 71-3



Ideal for  
coniferous  
wood



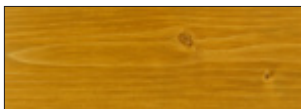
White



Lemon Yellow



Scots Pine



Oak



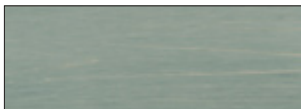
Chestnut



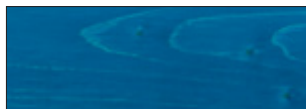
Blood Orange



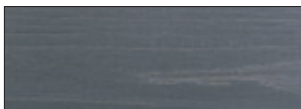
Swedish Red



Light Blue



Capri Blue



Steel Grey



May Green



Ebony



Tintable



1 l is sufficient  
for approx. 6–8 m<sup>2</sup>  
in two coats



# Koralan® Designlasur

## Design Scumble

Natural oil and water-based effect scumble

Photo of the Dr. Tower Dubai: © HESS TIMBER GmbH & Co. KG

**for outdoors**

### Properties:



- ✓ Water-based
- ✓ No flaking
- ✓ Weather-resistant
- ✓ Gives a glazed effect

Protects façades and wooden surfaces from the sun and rain and enhances them with a fascinating brilliant effect produced by the ultra-fine aluminium pigments in the scumble. Koralan® Design Scumble is therefore ideal for emphasising features in an elegant manner – such as in creatively challenging architectural projects or on high-quality wooden garden elements.

**Fulfils the requirements according to DIN EN 71-3  
“Safety of Toys” in accordance with Directive 2009/48/EC.**

**Application quantity:** approx. 120–160 ml/m<sup>2</sup> in two coats

**Container sizes:** 1 l | 2.5 l | 18.5 l



Water-repellent



UV protection



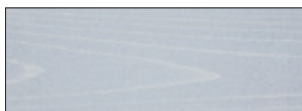
Toy safety according  
to DIN EN 71-3



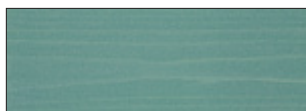
Brilliant  
effect



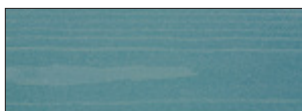
Crystal



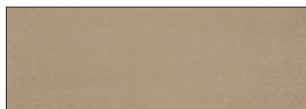
Silver



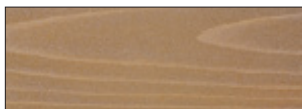
Petrol



Opal



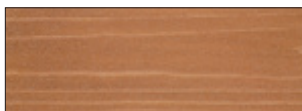
Pyrite



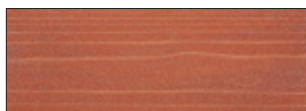
Sand



Quartz



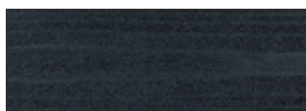
Amber



Coral



Platinum



Slate



Onyx



Tintable



1 l is sufficient  
for approx. 6–8  
m<sup>2</sup> in two coats

# Koralan® Isolierfarbe Weiß

## Insulating Paint White

Opaque, water-based blocking primer

for indoors + outdoors



### Properties:

- ✓ Enhances the durability and adhesion of subsequent coats
- ✓ Good penetration into wood
- ✓ Low-odour

For painting entire wooden surfaces outdoors, e. g. soffits, half-timbered buildings, windows, fences. Reduces the extent to which coloured wood constituents will bleed into subsequent light-coloured finishes. To be used outdoors in a system with Koralan® Impregnation Primer White. Can also be used indoors.

**Fulfils the requirements according to DIN EN 71-3**

**“Safety of Toys” in accordance with Directive 2009/48/EC.**

**Application quantity:** approx. 160 ml/m<sup>2</sup> in two to three coats

**Container sizes:** 0.75 l | 2.5 l | 10 l



White



Water-repellent



Acts as a seal



Toy safety according to DIN EN 71-3



1 l is sufficient for approx. 6 m<sup>2</sup> in two coats

# Koralan® Hirnholzschutz

## End Grain Wood Protection

Water-based seal

*for outdoors*



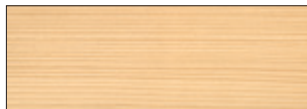
### Properties:

- ✓ Fast drying
- ✓ Moisture-regulating
- ✓ Can be overpainted
- ✓ Easy to handle

Moisture-regulating colourless coating for treating end grain surfaces (e. g. beam ends or grooved deck boards). Reduces the water or moisture uptake of the wood and reduces the bleeding through of wood constituents.

**Application quantity:** approx. 150–200 ml/m<sup>2</sup> in two coats

**Container sizes:** 0.25 l | 0.75 l | 2.5 l



Colourless



Water-based



Acts as a seal



1 l is sufficient  
for approx. 5–6 m<sup>2</sup>  
in two coats

# Koralan® Imprägnier Grund Farblos

## Impregnation Primer Colourless

Water-based wood preservation primer

for outdoors



### Properties:

- ✓ Fills pores in wood
- ✓ Fast drying
- ✓ Easy to sand
- ✓ Low-odour
- ✓ Enhances the durability and adhesion of subsequent coats



Ideal for the treatment of coniferous wood, which is then to receive a final decorative coating of scumble, paint or lacquer, e. g. for exterior cladding, gates, pergolas, windows, exterior doors. Provides preventative protection from blue stain and mould infestations.

**Approved biocidal product as per Regulation (EC) 528/2012.**

**Application quantity:** 120–140 ml/m<sup>2</sup>

**Container sizes:** 0.75 l | 2.5 l



Colourless

**Use biocidal products carefully.**

**Always read the labelling and product information before use.**

**The product is not available in all countries.**



Protection  
from blue stain  
and mould



Water-based



Ideal for  
coniferous  
wood



1 l is sufficient for  
approx. 7–8 m<sup>2</sup>  
in two coats

# Koralan® Imprägnier Grund Weiß

## Impregnation Primer White

Water-based wood preservation primer

**for outdoors**



### Properties:

- ✓ Fills pores in wood
- ✓ Fast drying
- ✓ Easy to sand
- ✓ Low-odour
- ✓ Enhances the durability and adhesion of subsequent coats

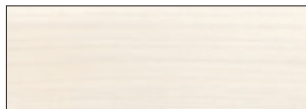


For the treatment of softwoods, which is then to receive a decorative coating of paint or lacquer, e. g. exterior cladding, gates, pergolas, windows, exterior doors. Most suitable for priming surfaces, which are then to be treated with Koralan® Insulating Paint White or Koralan® Exterior Paint White. Provides preventative protection from blue stain and mould infestations.

**Approved biocidal product as per Regulation (EC) 528/2012.**

**Application quantity:** approx. 120–140 ml/m<sup>2</sup> in two coats

**Container sizes:** 0.75 l | 2.5 l



White

**Use biocidal products carefully.**

**Always read the labelling and product information before use.**

**The product is not available in all countries.**



Protection  
from blue stain  
and mould



Water-based



Ideal for  
coniferous  
wood



1 l is sufficient for  
approx. 7–8 m<sup>2</sup>  
in two coats

# Koralan® Holzentgrauer

## Grey Wood Renovator

Cleaning concentrate, dilutable with water

powerful cleaning  
concentrate



### Properties:

- ✓ Colourless
- ✓ Easy to apply
- ✓ Low-odour
- ✓ Water-soluble
- ✓ Good cleaning effect

To refresh and prime weathered, greyed wood outdoors, e. g. for old decking and greyed garden furniture. Brings out the natural colour of the unweathered wood again. Deep-down action – based on oxalic acid.

**Application quantity:** approx. 50–150 ml/m<sup>2</sup> depending on the dilution and the extent of soiling

**Container sizes:** 1 l | 2.5 l



Water-based



Easy to apply



1 l is sufficient for  
approx. 8–12 m<sup>2</sup>



# Koralan® Holzreiniger Wood Cleaner

Cleaning concentrate, dilutable with water



**powerful cleaning  
concentrate**



## Properties:

- ✓ Colourless
- ✓ Easy to apply
- ✓ Low-odour
- ✓ Water-soluble
- ✓ Good cleaning effect

For the thorough cleaning of dirty and/or greyed garden furniture and corrugated boards made from coniferous wood or hardwood, thermally treated wood, wood plastic composite and much more. Deep-down action with a good cleaning effect – ideal as a pretreatment for the use of Koralan® Wood Oil, Koralan® Wood Oil Special etc.

**Application quantity:** approx. 20–60 ml/m<sup>2</sup> depending on the dilution and primer

**Container sizes:** 1 l | 2.5 l



Water-based



Easy to apply



1 l is sufficient for  
approx. 15–50 m<sup>2</sup>

## Koratect® Antibelag Anti-Growths

Very powerful cleaning concentrate

powerful cleaning  
concentrate



### Properties:

- ✓ Colourless
- ✓ Low-odour
- ✓ Water-soluble
- ✓ Good cleaning effect

For the thorough cleaning of dirty and/or greyed garden furniture and corrugated boards made from coniferous wood or hardwood, thermally treated wood, wood plastic composite and much more. Deep-down action with a good cleaning effect – ideal as a pretreatment for the use of Koralan® Wood Oil, Koralan® Wood Oil Special etc.

**Application quantity:** approx. 20–60 ml/m<sup>2</sup> depending on the dilution and degree of soiling

**Container sizes:** 1 l | 2.5 l | 25 l

Use biocidal products carefully.  
Always read the labelling and product information before use.  
The product is not available in all countries.



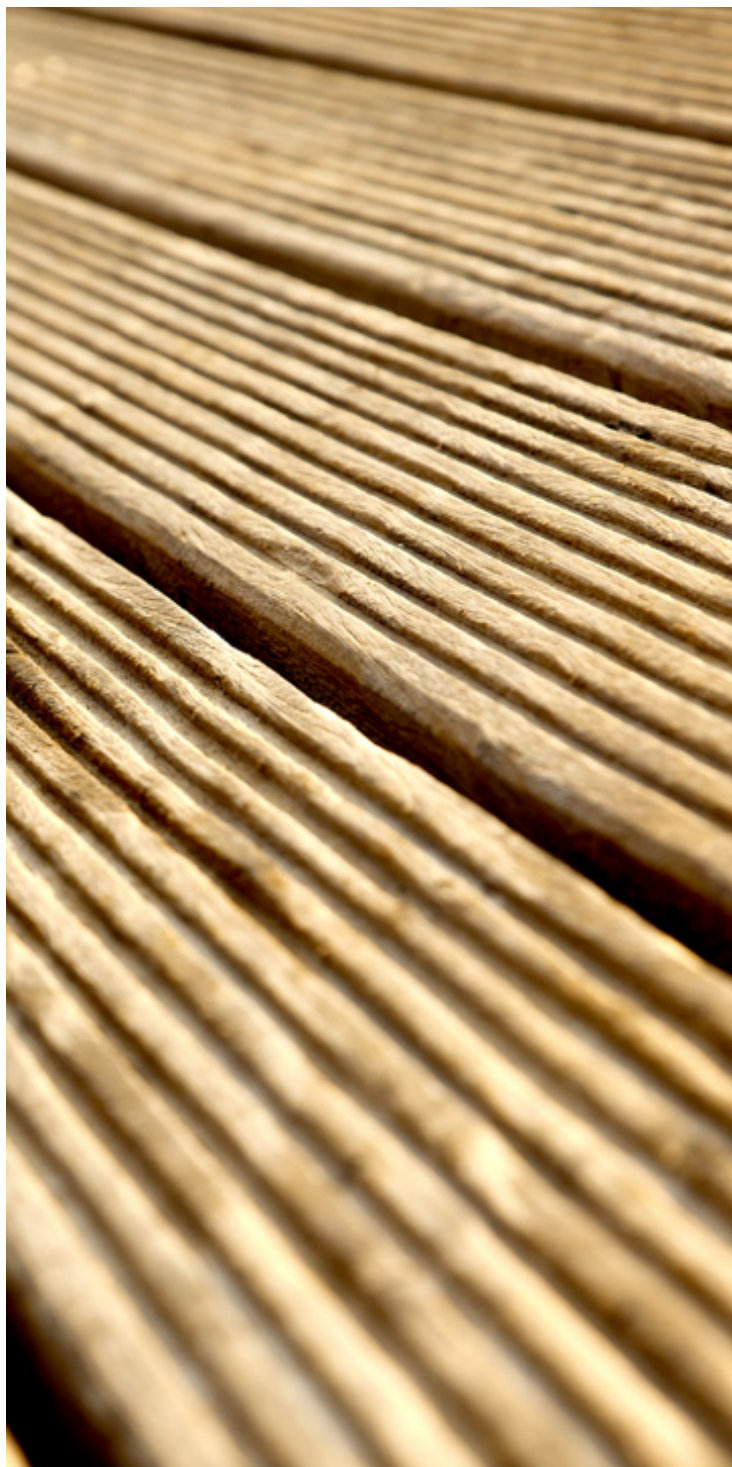
Water-based



Easy to apply

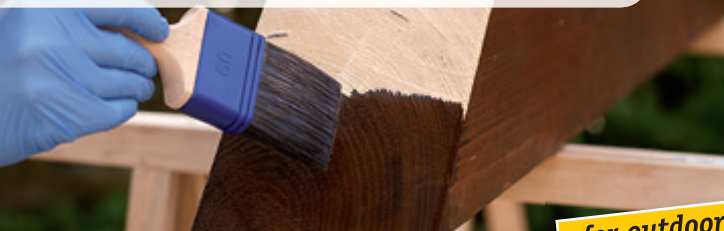


1 l is sufficient for  
approx. 20–50 m<sup>2</sup>



# Koralan® Cut & Protect

Water-based coating material



**for outdoors**



## Properties:

- ✓ Weather-resistant
- ✓ Moisture-regulating
- ✓ Water-based
- ✓ Good penetration into wood
- ✓ No flaking

Ideal for applying a subsequent treatment to cut surfaces of impregnated wood outdoors without ground contact.  
Ideal for coniferous wood.

The coating film is protected against blue stain and mould infestation. Protects wooden surfaces from weather factors (sun, rain).

Reduces water absorption and the risk of mould infestation.

Provides wood with highly effective protection from greying.

**Application quantity:** approx. 120–160 ml/m<sup>2</sup> in two coats

**Container sizes:** 0.75 l



Coating film is protected against blue stain and mould infestations



Water-repellent



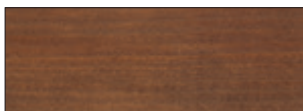
UV protection



Ideal for coniferous wood



Green



Brown



Grey



1 l is sufficient  
for approx. 6–8 m<sup>2</sup>  
in two coats

# Koralan® Beutenschutz-Farbe

## Hive protection colour

Water-based weather protection paint

**for outdoors**



### Properties:

- ✓ Tested bee-friendly
- ✓ Good flow properties
- ✓ Opaque, elastic
- ✓ Moisture-regulating
- ✓ Water-repellent after drying
- ✓ Low odour

Protective opaque coat and decorative surface treatment on wood and polystyrene® (polystyrol) outdoors.

Protects carpenter bee hives and hive sections against weather conditions such as rain and sun.

**Tested bee-friendly.**

**Fulfils the requirements according to DIN EN 71-3  
"Safety of Toys" in accordance with Directive 2009/48/EC.**

**Application quantity:** approx. 160 ml/m<sup>2</sup> in two work steps

**Container sizes:** 375 ml | 750 ml | 2.5 l



Highly  
water-repellent



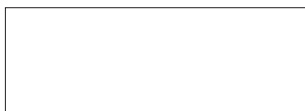
UV protection



Toy safety  
according to  
DIN EN 71-3



Tested  
bee-friendly



White



Yellow



Red



Blue



Green



Brown



1 l is sufficient  
for approx. 6 m<sup>2</sup>  
in two coats



# Koralan® Beutenschutz-Lasur

## Hive protection scumble

Water-based wood scumble

*for outdoors*



### Properties:

- ✓ Tested bee-friendly
- ✓ Spreads well
- ✓ Good flow properties
- ✓ Fast drying, with good open times
- ✓ Low odour, odourless after drying

For the surface refinement and decorative surface design of wood outdoors. Protects carpenter bee hives, hive sections, bee hives and other timber elements used in beekeeping against weather conditions such as rain and sun.

**Tested bee-friendly.**

**Fulfils the requirements according to DIN EN 71-3  
"Safety of Toys" in accordance with Directive 2009/48/EC.**

**Application quantity:** approx. 160 ml/m<sup>2</sup> in two work steps

**Container sizes:** 750 ml | 2.5 l



Highly  
water-repellent



UV protection



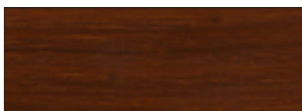
Toy safety  
according to  
DIN EN 71-3



Tested  
bee-friendly



Scots Pine



Walnut



Spruce Green



1 l is sufficient  
for approx. 6 m<sup>2</sup>  
in two coats

# Koralan® Futterzargen-Lack

## Brood box varnish

Water-based sealing varnish

for outdoors



### Properties:

- ✓ Tested bee-friendly
- ✓ Colourless
- ✓ Good flow properties
- ✓ Fast drying, with good open times
- ✓ Low odour, odourless after drying

Colourless protective coating, for surface sealing of wooden and polystyrene® (polystyrol) feed frames and food bags in apiculture.

Protects the inside of the brood box from moisture and dirt.

**Tested bee-friendly.**

**Fulfils the requirements according to DIN EN 71-3  
"Safety of Toys" in accordance with Directive 2009/48/EC.**

**Application quantity:** approx. 160 ml/m<sup>2</sup> in two work steps

**Container sizes:** 750 ml | 2.5 l



Highly  
water-blocking



UV protection



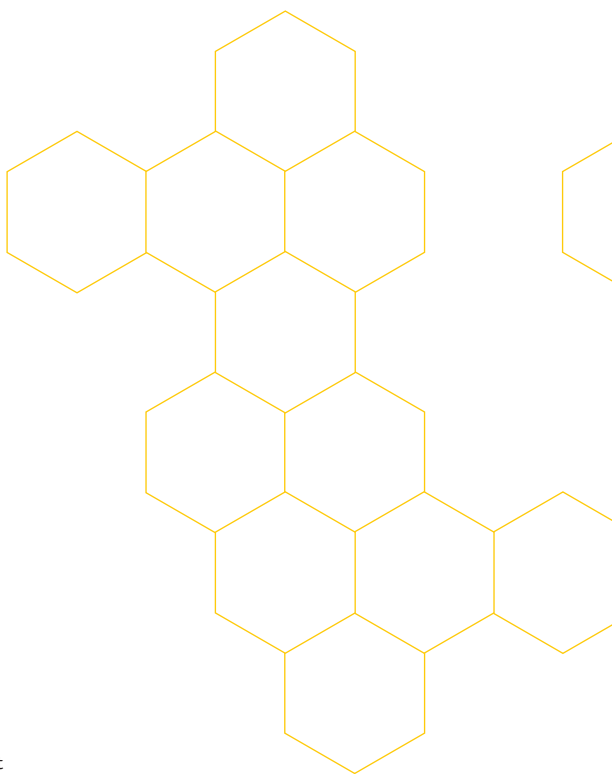
Toy safety  
according to  
DIN EN 71-3



Tested  
bee-friendly



Colourless



1 l is sufficient  
for approx. 6 m<sup>2</sup>  
in two coats

## KORA® Accessories for the Cleaning and Care of Wood



### KORA® Flächenstreicher | *Wide Brush*

15 cm wide floor paint brush equipped with a robust blend of synthetic fibres, wooden body and zinc-coated side handle holder. Ideal for the initial coat and renovation of installed decking, for example.



### KORA® Schrubber | *Scrubber*

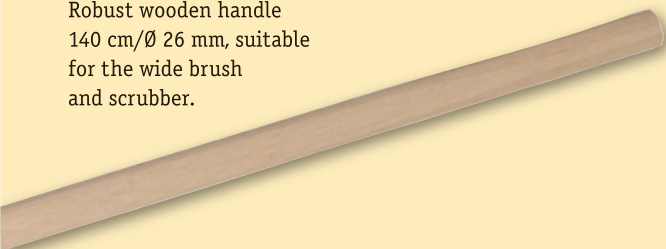
22 cm scrubber equipped with strong, heatproof and acid-resistant plant fibres in 5 rows. 3-side barb with handle holder. Ideal for cleaning and de-greying wooden surfaces.





## **KORA® Holzstiel | *Wooden Handle***

Robust wooden handle  
140 cm/Ø 26 mm, suitable  
for the wide brush  
and scrubber.

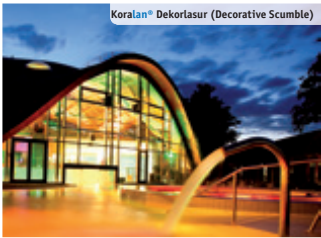


## **KORA® Bürste | *Brush***

Brush equipped with strong,  
heatproof and acid-resistant  
plant fibres. Ideal for cleaning  
and de-greying wooden  
surfaces.



# References



**Toskana Thermal Baths**  
Bad Orb, Germany



**Seed Centre, Forestry Office**  
Hanau-Wolfgang, Germany



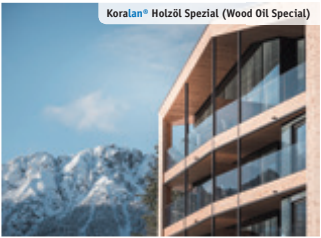
**Holiday home**  
Lithuania



**Kirschgarten housing estate**  
Halle, Germany



**Road maintenance depot**  
Mersch, Luxembourg



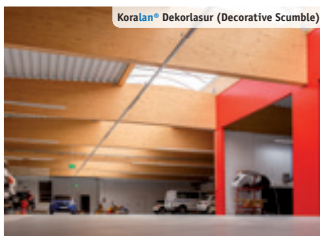
**Berghotel Zirm**  
South Tyrol

More information can be found at [www.kora-holzschutz.de/en](http://www.kora-holzschutz.de/en)





**Wood wholesale Hilger Holz**  
Kall, Germany



**Eisemann automotive repair centre**  
Fellbach, Germany



**Holzbau Bildungszentrum**  
Biberach, Germany



**Senior centre Waldheim**  
Baiersbronn, Germany



**Building yard**  
Unterföhring, Germany



**Office building**  
Freudenstadt, Germany

### Room for notes:





**THE BEST FOR YOUR WOOD.**

**Kurt Obermeier GmbH**  
Berghäuser Straße 70  
57319 Bad Berleburg  
GERMANY

Phone: +49 2751 524-0  
[info@kora-holzschutz.de](mailto:info@kora-holzschutz.de)  
[www.kora-holzschutz.de/en](http://www.kora-holzschutz.de/en)

